

GenkiPhonics.com Part 1

s



i



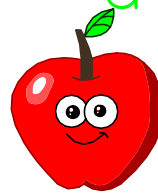
t



p



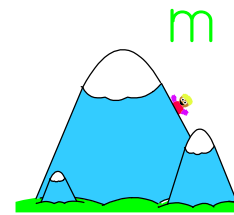
a



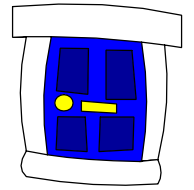
n



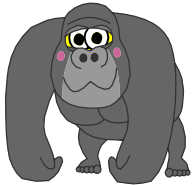
m



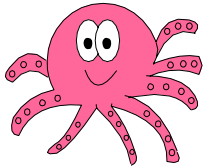
d



g



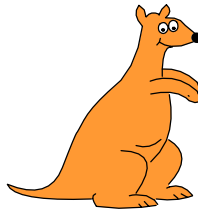
o



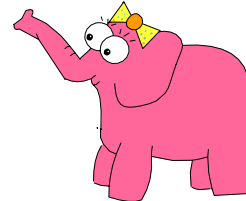
c



k



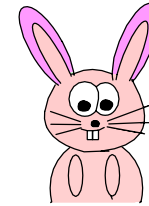
e



u



r



h



b



f



l



j



v



w



x



y



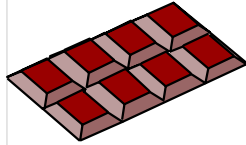
z



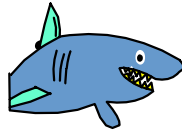
qu



ch



sh



th



ng



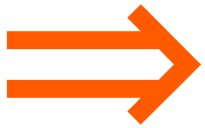
ai



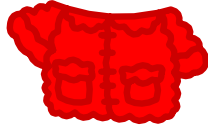
ee



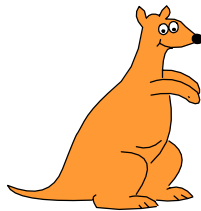
igh



oa



oo



oo



ar



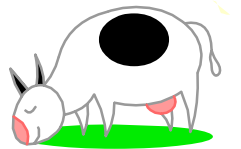
or



ur



ow



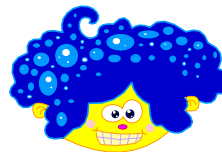
oi



ear



air



er



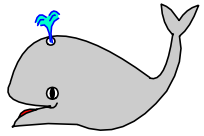
ure



ph
phone



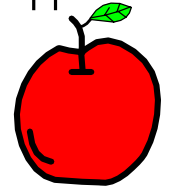
wh
whale



wr
write

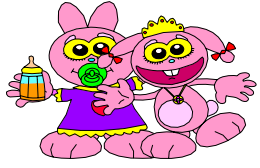


le
apple



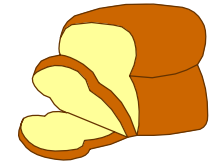
s

sisters



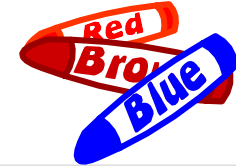
ea

bread



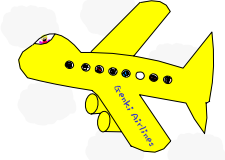
ay

crayon



a_e

plane

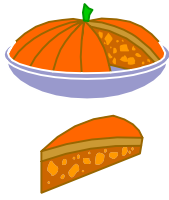


y
sky



ie

pie



i_e

nine



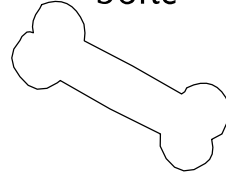
ow

snowman



o_e

bone



ew

new



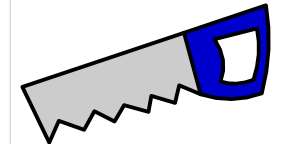
u_e

parachute



aw

saw



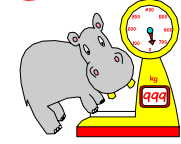
ou

cloud



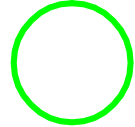
y

heavy



c

circle



g

gingerbread

